

## MB 20/8 M2 1,1KW (MB201280)

### GENERAL DATA



#### MEDIUM PRESSURE CENTRIFUGAL FAN WITH FORWARD IMPELLER

##### MANUFACTURING FEATURES:

- Rolling steel sheet housing.
  - Completely joined or welded housing.
  - Galvanised steel sheet simple inlet forward curved impeller.
  - Polyester powder finishing coat.
  - Standard asynchronous squirrel-cage motor with IP-55 protection and Class F insulation.
- Manufactured with standard voltages: 230V 50Hz in single phase motors and 230/400V 50Hz in three phase motors.

- Available positions (to be indicated in case of order): LG270, LG0, LG45, LG90, LG135, LG180, LG225, LG315, RD0, RD45, RD90, RD135, RD180, RD225, RD270, RD315.
- The indicated codes correspond to the model in position LG270

##### APPLICATIONS:

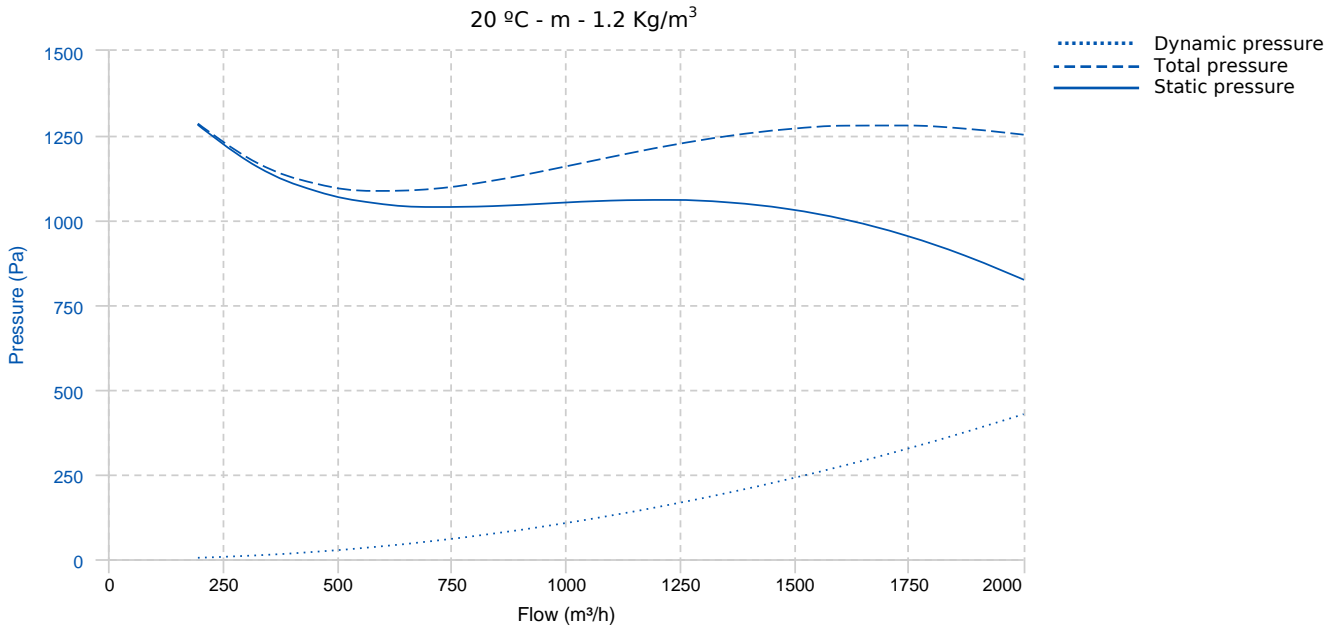
Designed for inline installation, they are suitable for:

- Industrial applications, extraction or injection of air.
- Cooling of machines and parts.
- Suitable for transporting totally clean air without dust.
- Maximum working temperature: carried air: 130°C, environment single phase 50°C, three phase 60°C.

##### UNDER REQUEST:

- Special voltages.
- 2 speed motors (three phase motors).
- Fan for air working temperatures up to 250°C.
- Fans provided with cooling disk for high temperature.
- Option with support for models where it is not included, and without support for models where it is included.

## PERFORMANCE CURVE

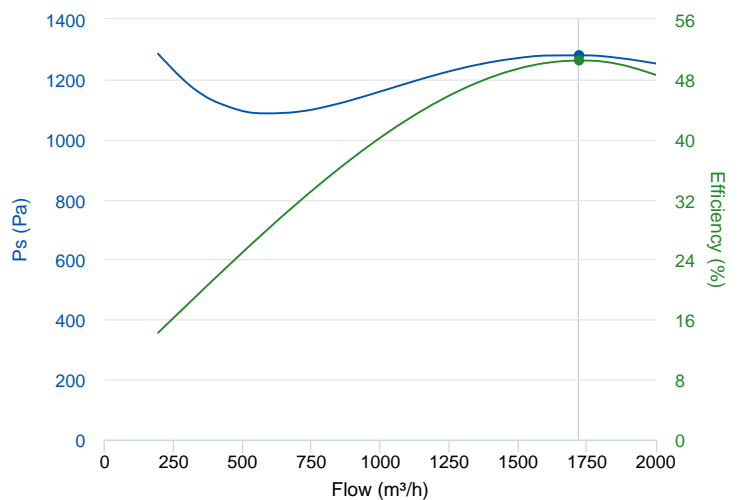


## TECHNICAL DATA

Fan							
RPM	2800	Approx. weight	19 kg	Max. Flow	2000 m³/h		
Motor							
Power	1,1 kW	RPM	2800	Capacitor	30µF 450V	I max. (230V)	6,71 A
Size	80	Approx. weight	10.6 kg	Efficiency (%)	75 %	FP	0.95

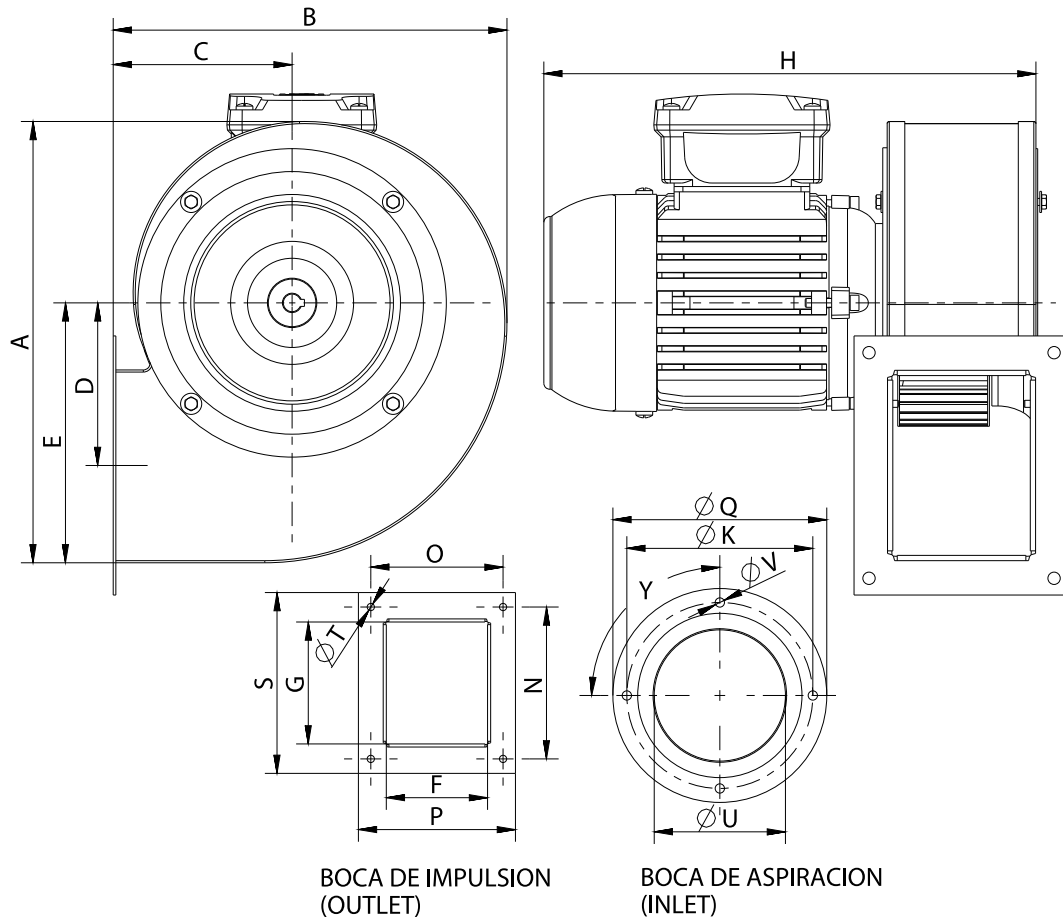
## ERP DATA

Fan data sheet		
Fan type	Ventilator centrifugal cu pale drepte sau curbate spre inainte.	
Installation category	B_2026:	
Efficiency category	Total	
The fan has to be installed with VF	No	
Motor power (kW)	1.1	
	Fan values	ERP Requirements 2027
Max. efficiency (%)	50.51	47.39
Efficiency grade (N)	60.12	57
Pabs (kW)	1.216	
Flow (m³/h)	1721.9	
Total pressure (Pa)	1280.88	
Speed (m/s)	2800	



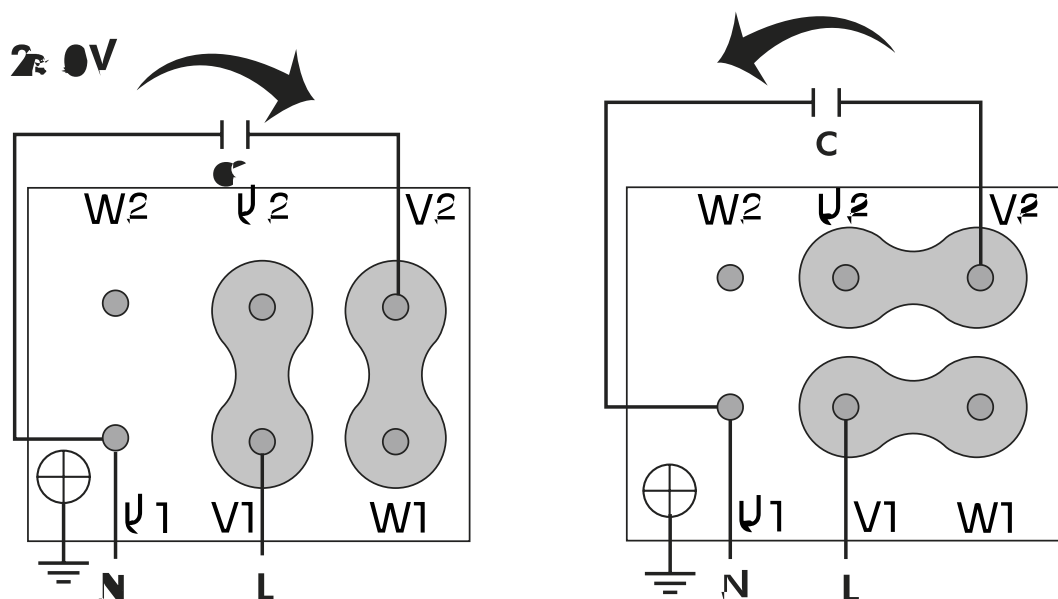
	Fan values	ERP Requirements 2027
Specific ratio	1.00	

## DIMENSIONS

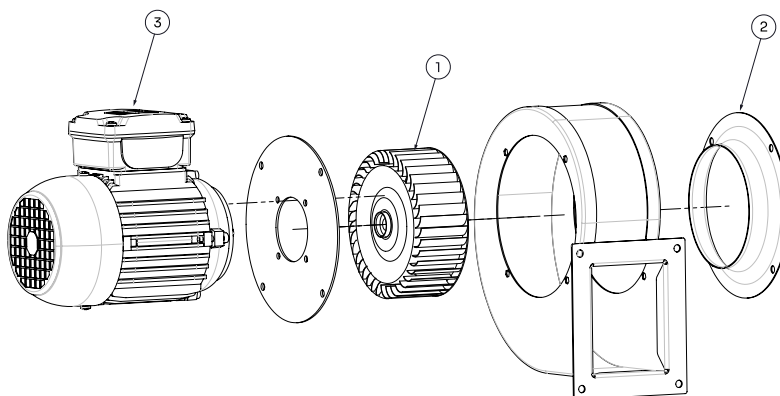


Dimensions (mm)									
A	392	B	331	C	140	D	142	E	230
F	130	G	161,5	H	374	K	230	N	189
O	160	P	184	Q	255	S	213	TØ	9
UØ	161	VØ	9	Y	8x45°				

## WIRING DIAGRAM



## SPARE PARTS



	Code	Model	Qty
1	R-253199381	TURBINA GALV.200x81,9x19 (LG)	x1
3	720301049	MOTOR 1,1kW M2 B14 230V	x1